



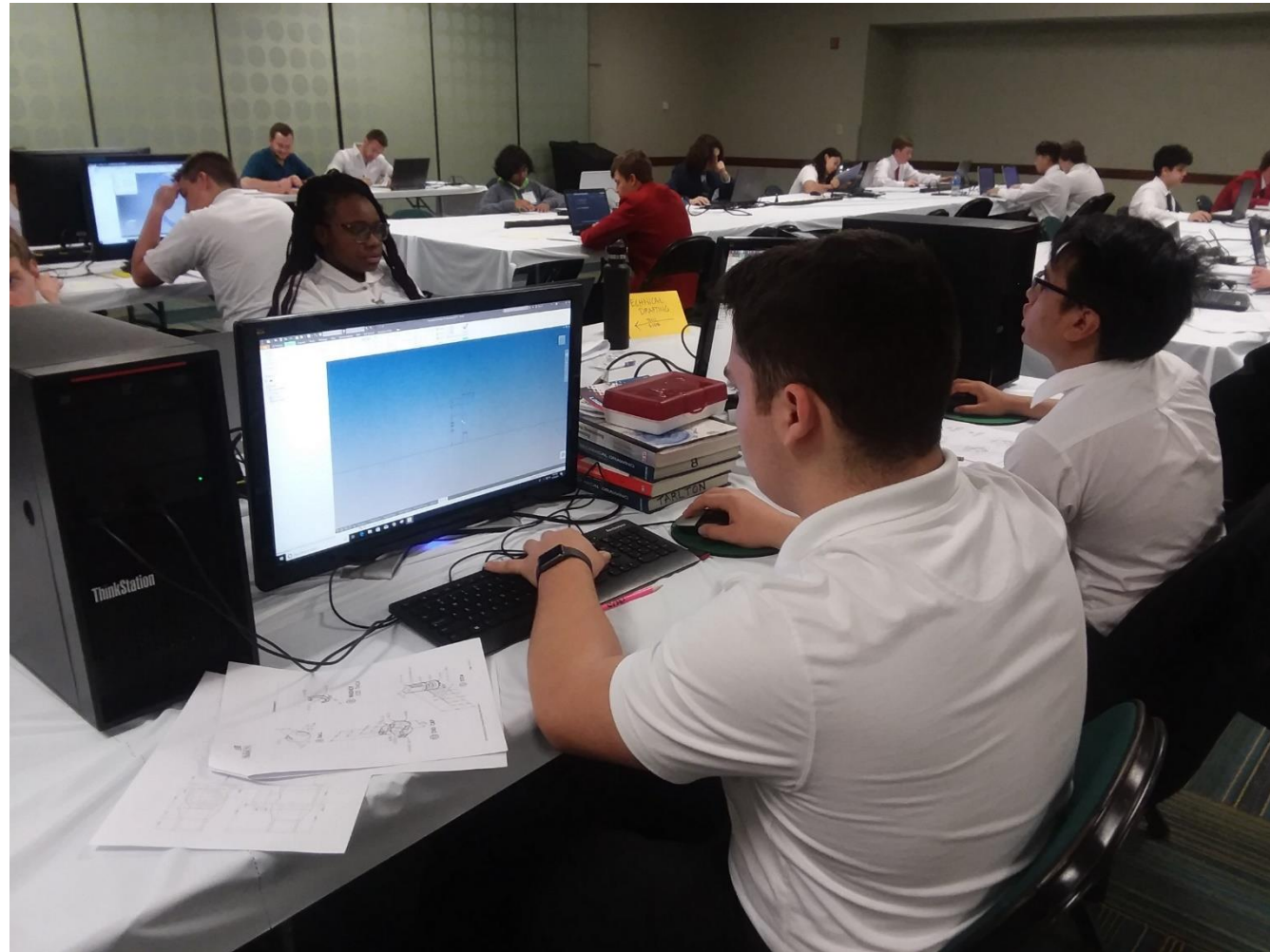
How does being involved in **SkillsUSA** help students at **West Montgomery High School**?



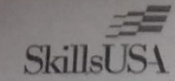
- Resumes are required by SkillsUSA contests
- Soft Skills are learned at WMHS and tested during SkillsUSA contests
 - Face-to-face interviews
- Students are walking away from WMHS and right into jobs from contacts made through SkillsUSA
 - Hunter Wease
- Students gain regional, state and national recognition

Technical Drafting Skills Contest

Franklin Stutts – 2nd Place



Technical Drafting Skills Contest



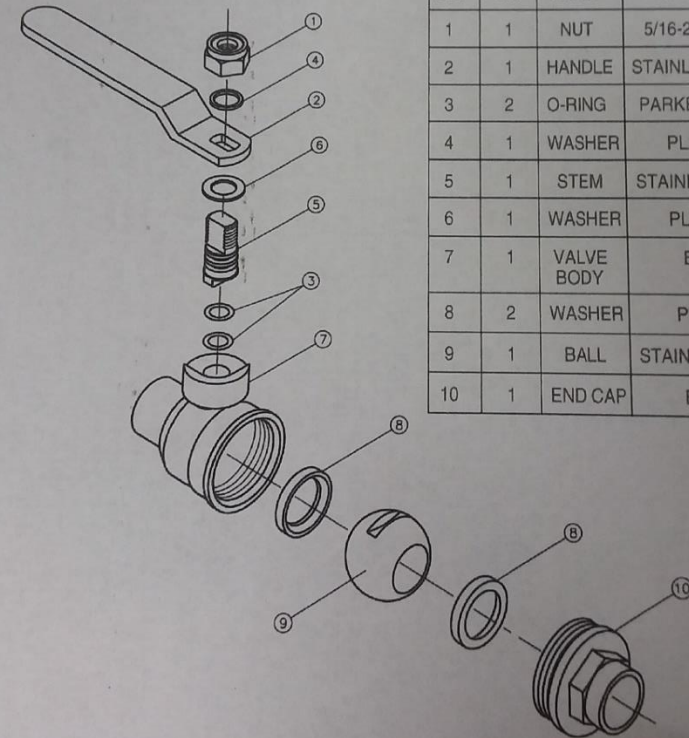
Please provide:
Your computer ID: _____
Password: _____
Your cell # (or advisor's cell #): _____

Contestant # _____

2019 SkillsUSA NC - Technical Drafting

Assembly Name: Ball Valve

SPECIFIC INSTRUCTIONS: Prepare a complete set of working drawings with one detail drawing per sheet and the assembly and parts list on another sheet. When preparing the assembly drawing, use separate balloons for each part in each view or use only one balloon in the view that most clearly identifies the part. This is a prototype project. Errors are likely in this problem. Identify and correct any errors found. Verify dimensions during assembly. Establish tolerances between mating parts as needed. See the last page of this contest problem for more details on deliverables.



PARTS LIST

KEY	QTY	NAME	MATERIAL	PART NO.
1	1	NUT	5/16-24UNF-2	5DT1001
2	1	HANDLE	STAINLESS STEEL	1DT1002
3	2	O-RING	PARKER #2-008	5DT1003
4	1	WASHER	PLASTIC	1DT1004
5	1	STEM	STAINLESS STEEL	1DT1005
6	1	WASHER	PLASTIC	1DT1006
7	1	VALVE BODY	BRASS	1DT1007
8	2	WASHER	PLASTIC	1DT1008
9	1	BALL	STAINLESS STEEL	1DT1009
10	1	END CAP	BRASS	1DT1010

Firefighting Intermediate Skills Contest

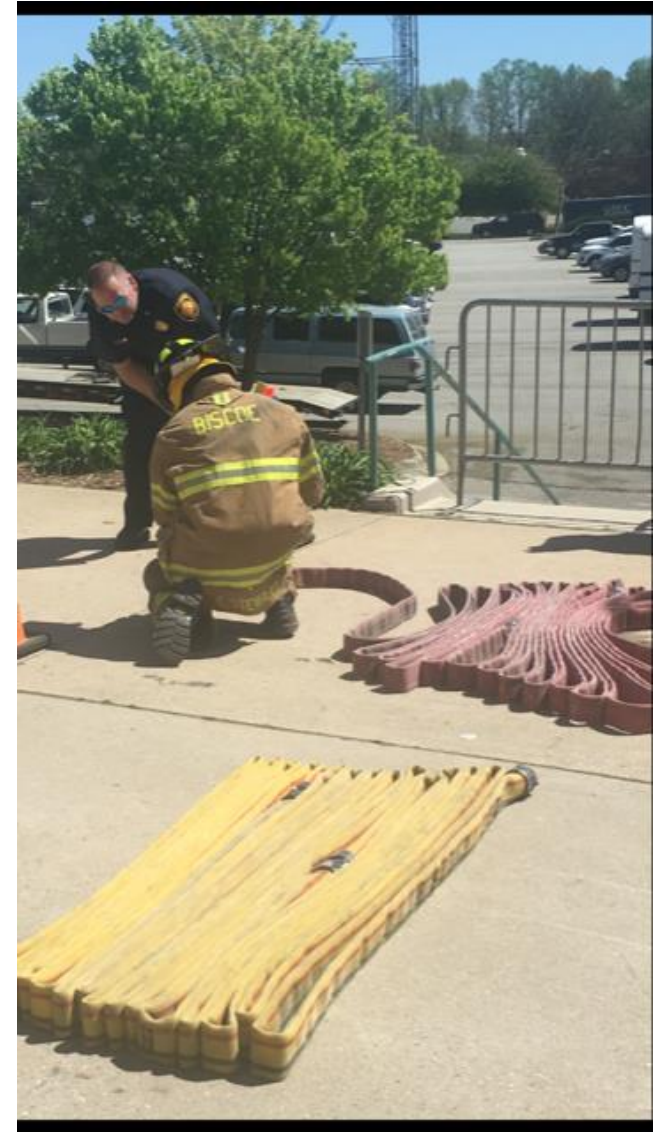
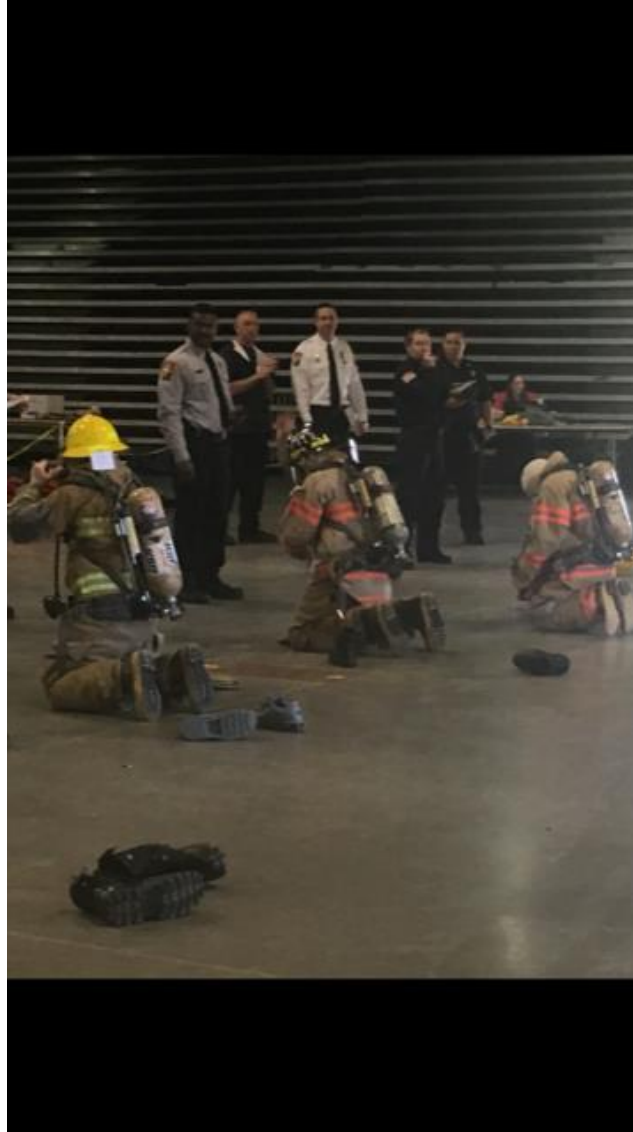
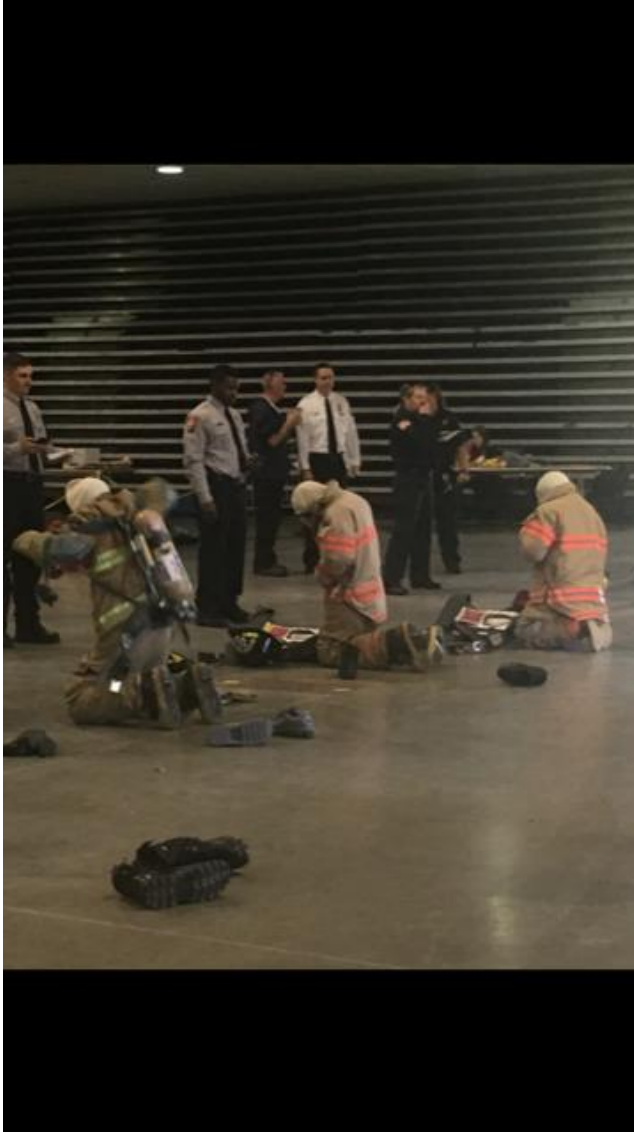
Trey Anliker – 1st Place

Jayden Bruton – 2nd Place

Javahl Shipp – 3rd Place



Firefighting Intermediate Skills Contest



Motorcycle Service Technology Skills Contest

Hunter Wease – 4th Place



Automotive Skills Project Showcase Contest

Kyler Dyson – 1st Place

